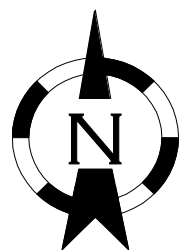


Marine Drive West Bike / Ped Paths



- **Path** off-street
- **Bike Lanes** on-street
- **Lower Traffic Street**
- - - **Caution** area

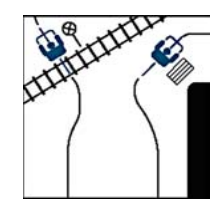
Restrooms

Bike Shops Weir's Cyclery
5036 N Lombard
8621 N Lombard

Safe Cycling



- Pedestrians have the right of way! Slow down as needed to pass safely.
- Give an audible warning ("on your left") when you pass.

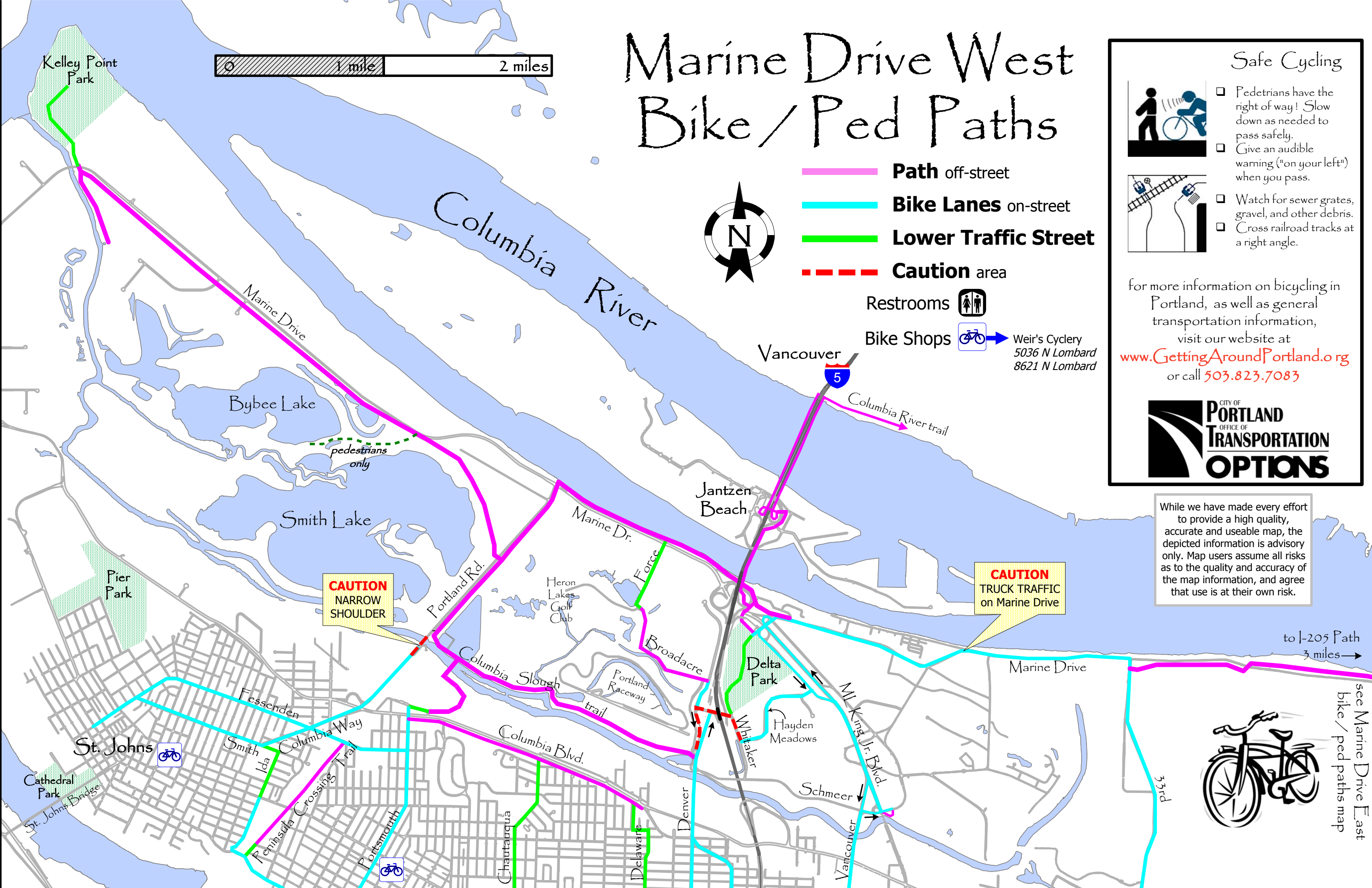


- Watch for sewer grates, gravel, and other debris.
- Cross railroad tracks at a right angle.

for more information on bicycling in Portland, as well as general transportation information, visit our website at www.GettingAroundPortland.org or call 503.823.7083



While we have made every effort to provide a high quality, accurate and useable map, the depicted information is advisory only. Map users assume all risks as to the quality and accuracy of the map information, and agree that use is at their own risk.



to I-205 Path
3 miles →



see Marine Drive East
bike / ped paths map